



AIMS NEWSLETTER

ATTACHMENT INFORMED TRAUMA SENSITIVE PRACTICE AT LIBBERTON PRIMARY

WHAT IS AITS?

We know that strong, positive relationships are key to children's wellbeing and success in education. That's why we have embraced South Lanarkshire Council's Attachment Strategy, which promotes attachment-informed, trauma-sensitive approaches in schools and nurseries.

The Attachment Strategy is based on understanding how early relationships shape a child's development and how we, as a school and nursery, can create a nurturing environment that helps every child thrive.



WHAT DOES THIS LOOK LIKE?

By embedding the Attachment Strategy into our daily practice, we strive to ensure that:

- Your child feels safe and secure at school.
- Staff take the time to understand and support emotions and behaviour rather than reacting negatively.
- Positive relationships are at the heart of everything we do, helping children to develop confidence and resilience.
- We create an environment where all voices are heard, including those of parents and carers.

THE SIX PLEDGES

.....

- 1 Act to make a difference – Ensuring that we take real steps to create a safe, nurturing learning environment for all children.
- 2 See the whole person – Recognising that every child's experiences shape their emotions and behaviour.
- 3 Hear their voice – Making sure children's thoughts, feelings, and opinions are valued and included in school life.
- 4 Recognise behaviour as communication – Understanding that children express their feelings and needs through their behaviour.
- 5 Respond with compassion – Providing emotional support and helping children feel secure and respected.
- 6 Believe in change – Embedding these approaches to support long-term positive outcomes for all children.





AITS NEWSLETTER

ATTACHMENT INFORMED TRAUMA SENSITIVE PRACTICE AT LIBBERTON PRIMARY

WHAT WILL WE DO NEXT?

After carrying out questionnaires with parents/carers, staff and pupils, we have highlighted key next steps to support us in achieving our next pledge accreditation – Hear Their Voice.



Sharing AITS approaches with parents/carers at home through regular newsletters and app posts.



Keep parents/carers and children informed of our progress and consult them to ensure partnership working.



Create a working party with a focus on supporting LPS become an AITS establishment.

RESTORATIVE APPROACH

Restorative approaches are built on values which separate the person from the behaviour. They promote accountability and seek to repair any harm caused in a situation.

A restorative approach may include having a 'restorative conversation'. Staff use restorative language and questions to allow children to understand the impact of their behaviours.

PROGRESS SO FAR..

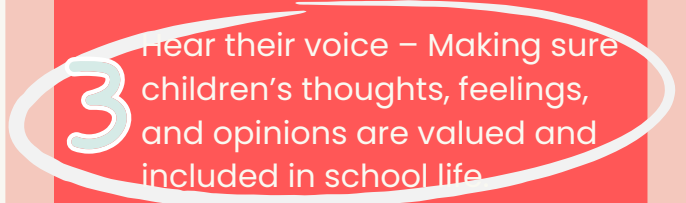
.....



Act to make a difference – Ensuring that we take real steps to create a safe, nurturing learning environment for all children.



See the whole person – Recognising that every child's experiences shape their emotions and behaviour.



Hear their voice – Making sure children's thoughts, feelings, and opinions are valued and included in school life

4

Recognise behaviour as communication – Understanding that children express their feelings and needs through their behaviour.

5

Respond with compassion – Providing emotional support and helping children feel secure and respected.

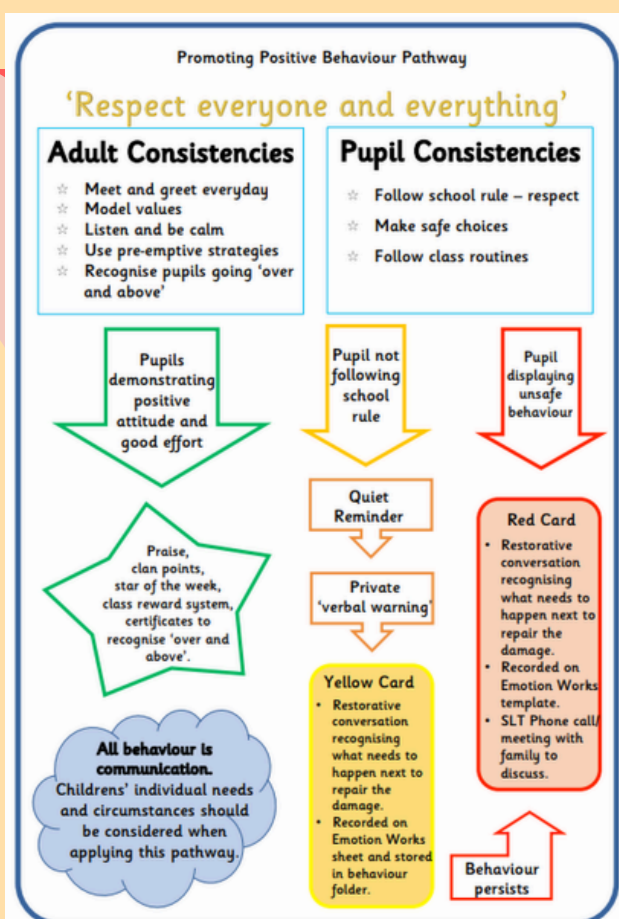
6

Believe in change – Embedding these approaches to support long-term positive outcomes for all children.

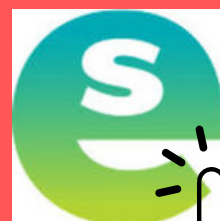


ATTACHMENT INFORMED TRAUMA SENSITIVE PRACTICE AT LIBBERTON PRIMARY

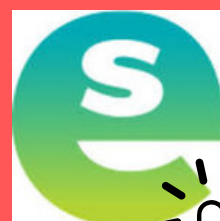
These conversations take place as shown on our 'Positive Behaviour Pathway'. Whereby we strive to support children in managing behaviours differently and providing strategies to do so.



EDUCATION SCOTLAND – RESTORATIVE APPROACH



**EDUCATION SCOTLAND –
PARENTZONE**



SLC ATTACHMENT STRATEGY

